


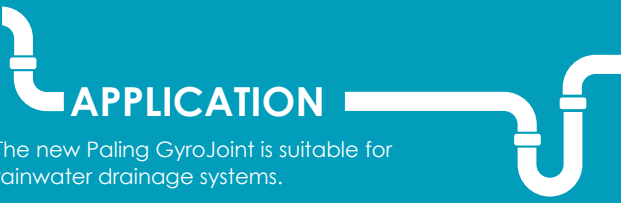
PRODUCT RANGE
RAINWATER
 GYROJOINT

FEATURES

- An Innovative Vibration Absorbing Joint
- A pipe connector designed to accommodate gyrating motion and multiple axes turning
- Provides connection between two pipes under static-dynamic or dynamic-dynamic conditions
- Lead-free
- ISO 9001 compliant
- Made from high quality EPDM material

 **ADVANTAGES**

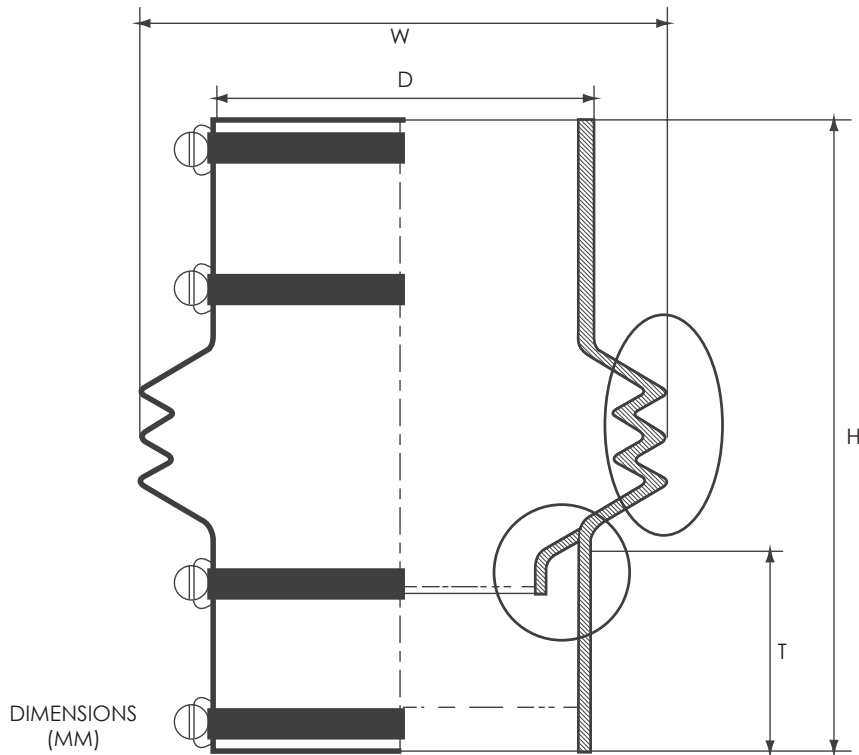
- Allows 50% more Vibrating Movement in 3 Dimensional Directions
- Prevents Dislocation
- Leak Resistant
- Weather Resistant
- Resilient, Durable and Strong
- Universal joint adapter for piping system

 **APPLICATION**

The new Paling GyroJoint is suitable for rainwater drainage systems.

Highly recommended for elevated highways, bridges, flyovers, U-turns and interchanges, LRT and exclusive MRT designs.

RAINWATER SYSTEM & GYROJOINT/// GYROJOINT SPECIFICATION & DETAILS



GyroJoint Dimensions

CODE NO.	NOM. SIZE (mm)	DIMENSIONS (mm)				NO OF CLIPS
		H	W	D	T	
2268 110 02	110	252	207	126	64	2
2268 160 02	160	327	257	176	100	4
2268 200 02	200	359	297	217	115	4
2268 250 02	250	350	349	270	80	4
2268 315 02	315	350	414	336	80	4

Physical properties

HARDNESS	60+5 IRHD
OPERATING	-30 to 120°C
TENSILE STRENGTH	15 MPa
E MODULUS	4 MPa
*TYPICAL VALUES	

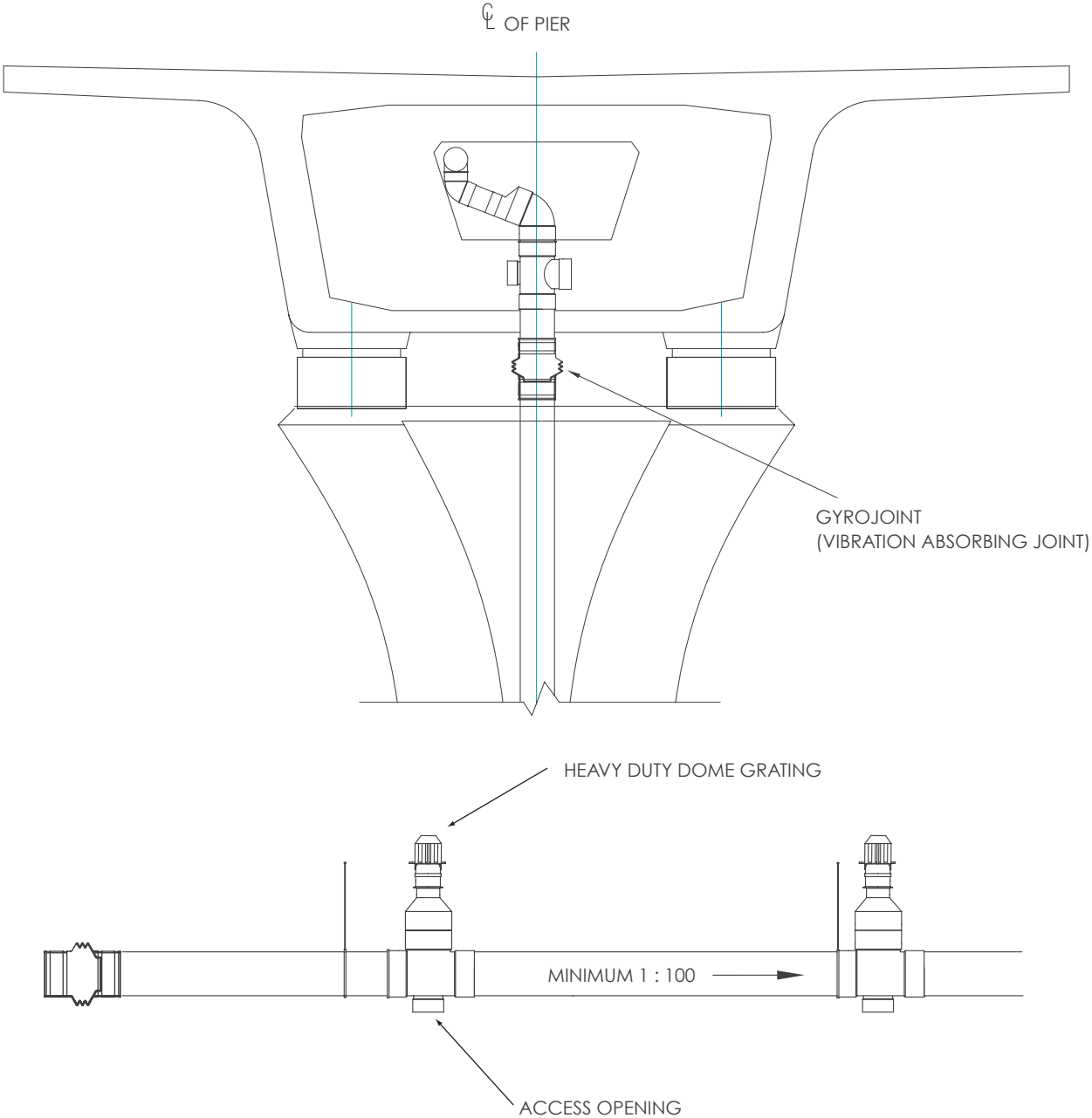
GyroJoint Allowable Movement

Nom SIZE (mm)	EXTENSION (mm)	COMPRESSION (mm)	LATERAL	ANGULAR
110	80	60	50	45
160	80	60	50	45
200	80	60	50	45
250	100	100	80	45
315	100	100	80	45

Chemical Resistance

TYPE OF CHEMICALS	RESISTANCE
ALCOHOL	EXCELLENT
ACIDS	FAIR
ALKALIS	EXCELLENT
ESTERS	EXCELLENT
OZONE	EXCELLENT

Rainwater Drainage For Civil Structure



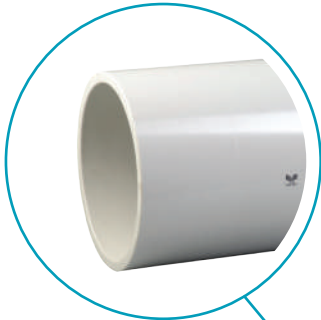
GyroJoint: an Innovative Vibration Absorbing Joint, allowing 50% more Vibrating Movement. A pipe connector designed to accommodate gyrating motion and multiple axes turning. Provides connection between two pipes under static-dynamic or dynamic-dynamic conditions.

The new Paling GyroJoint is suitable for rainwater drainage systems. Highly recommended for elevated highways, bridges, flyovers, U-turns and interchanges, LRT and exclusive MRT designs.

RAINWATER SYSTEM & GYROJOINT /// LAYOUT



**HEAVY DUTY
DOME GRATING**



**BS EN 12200
RAINWATER DOWNPIPE**



**ACCESS
OPENING**



GYROJOINT

